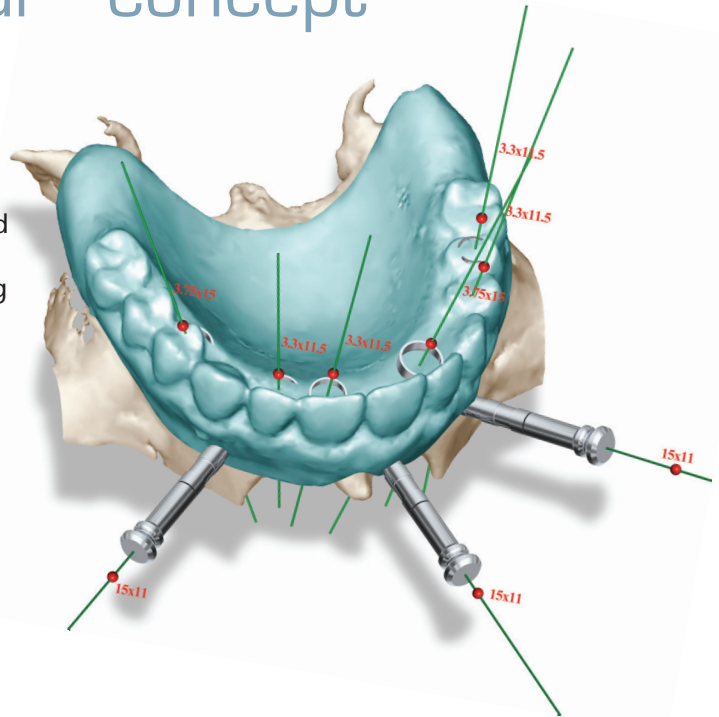


The Teeth-in-an-Hour™ concept

documented up to 5 years

The Teeth-in-an-Hour™ concept documented up to 5 years. The Teeth-in-an-Hour™ concept builds on thorough diagnostics using computer tomography and pre-planning, prior to the surgical procedure and installation of final prosthesis. The system allows for the complete restoration of edentulous patients using minimally invasive techniques, which reduce pain and swelling to a minimum. The Teeth-in-an-Hour™ concept, which is based upon 10 years of research in cooperation with the Katholieke Universiteit Leuven in Belgium, received FDA clearance in 2004 and was launched in May 2005 when the 1-year data confirmed the excellent performance of the system.



- A prospective multi-centre study including 27 patients and 184 implants was published in the peer-reviewed journal *Clinical Implant Dental and Related Research* in 2005 (1). This one-year report on totally edentulous maxillas showed a 100% implant survival rate.
- A 3-year report on the prospective multi-centre study on Teeth-in-an-Hour is under preparation. The cumulative survival rate is 96.3 %, based upon 19 patients and 118 implants reported so far. The 3-year report will be completed in April 2007.
- A retrospective study including 30 consecutive patients and 212 implants followed up to 5 years has been accepted for publication in the *Journal of Prosthetic Dentistry* (2). The non-smoking patients demonstrated an impressive cumulative survival rate: 99%. When including the smokers, this survival rate decreased to 92%.
- In a retrospective 7-center compilation, including both prospective and retrospective data involving 639 implants (with 440 implants followed for at least one year) the absolute survival rate is 96.7 % when using the Teeth-in-an-Hour™ protocol. Considering that the vast majority of implants in these centers were inserted in the upper jaw - where the success is less good than in the lower jaw - this compares favorably with previous publications on immediately loaded implants. A recent review at the EAO consensus conference (3) indicates survival rates for immediately loaded implants in the upper jaw ranging from 82 to 100%.

- 1 van Steenberghe D, Glauser R, Blomback U, Andersson M, Schutyser, Pettersson A, Wendelhag I. A computed tomographic scan-derived customized surgical template and fixed prosthesis for flapless surgery and immediate loading of implants in fully edentulous maxillae: A prospective multicenter study. *Clin Implant Dent Relat Res.* 2005;7 (Suppl 1):111-120.
- 2 Sanna A, Molly L, Van Steenberghe D. The rehabilitation of fully edentulous patients by means of immediately loaded implants: A retrospective study on 30 consecutive patients treated by the Teeth-in-an-Hour™ concept. Accepted for publication in *J Prosth Dent.*
- 3 Nkenke E, Fenner M. Indications for immediate loading of implants and implant success. *Clin. Oral Imp. Res.* 17 (Suppl. 2), 2006; 19-34

Nobel Biocare AB February 2007